

# ALUMINUM SYSTEMS



# BETA

URNITURE  
- MODERN SOLUTIONS FOR YOUR HOME -

*AFFurniture Inc., always attentive to the innovative demands for design within the interior decoration sector, suggests, in this new series (Aluminium Systems) the easiest way to innovate your suggestions using these materials, which are now more often requested for interior decoration, either due to aesthetics needs or to its lightness and lasting quality.*

*This idea was born from the proposal of bases made in extruded aluminium products, which can be settled in various ways to form base structures used in the living area, for wardrobe box equipment, or to complete the functionality of kitchen tops and home office furniture.*



2  
BETA SYSTEM  
ANODIZED  
BROWN



10  
BETA SYSTEM  
ALUMINIUM



*"BETA" System presented here in the new finishing anodized Brown, is the system based on a profile AFF aluminum and a series of accessories that can give rise to all those structures in view of modern furnishings.*



# BETA System

*“BETA” System, as presented here, in its new brown anodized colour, is the system based on aluminium-bordering and on a series of accessories which allows us to create all the modern structures at sight used for interior decoration.*





*Kit fixing support*

For shelf mm 300  
**ASS53.0143.030**

For shelf mm 500  
**ASS53.0242.030**



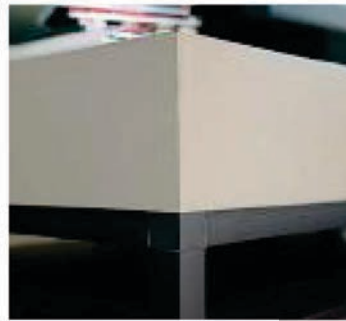
*Fixing support for shelf*  
*Set of 2.*

**A7090.0128.030**



*Neon lamp for  
aluminium profile*

**A4013.0543.028 (pag. 18)**



*Angle connection*

**A7050.0035.030**



*"BAXIT" System (pag. 20)*



*"BAXIT" System (pag. 20)*





# BETA System



*Aluminium cover / profile  
for Item. A7070*

**A7089.3000.170**

*1. Fixing support for shelf.  
Set of 2*

**A7090.0128.030**

*2. Glass stop.- Set of 2*

**A7094.0070.030**



BETA  
System



1. *Oval tube holder.*

**Set of 2**

**A7055.0015.034**

2. *Oval tube 15 x 30mm*

**A7072.3000.035**



*Fixing support for shelf.*

**Set of 2**

**A7054.0280.034**



*Side fixing support for chest of drawers.*

**Set of 2**

**A7067.0070.034**



# BETA System

Aluminum only



A7161BA4.....035

*The shelves are based on aluminium sections that differ of form and size and different versions are available with different depths. In addition to the three standard lengths special size are available by request.*

## ADAPTERS



A7081.0000.034

A7083.0000.034



A7082.0000.034

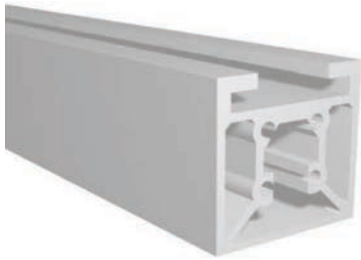
A7084.0000.034



A7161BA3.....035



A7161B4.....035



*Angle connector*  
A7050.0035.030

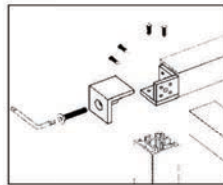
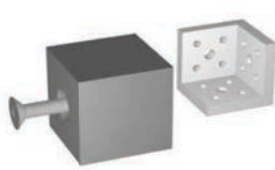


*Aluminium cover/profile for A7070.*  
A7089.3000.170

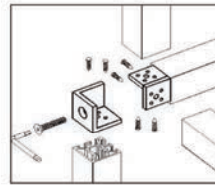
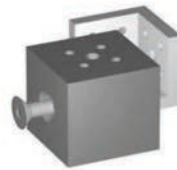


*Neon lamp for aluminium profile.*  
A4013.0543.028 (pag. 18)

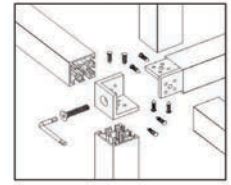
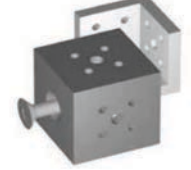
*“BETA” System is a flash-structure system based on bordering, made to measure, connectable from 3 to 5 profiles, furnished with a series of accessories which allow for manifold realization, from simple bases or structures for tables, to complete wardrobe box structures and internal wardrobe space.*



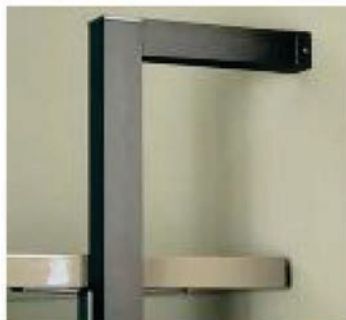
A7050



A7051



A7052



*Kit fixing support*

*For shelf mm 300*  
ASS53.0143.030

*For shelf mm 500*  
ASS53.0242.030



*Fixing support ceiling/wall.*

A7056.0035.034



*Fixing support ceiling/wall.*

A7056.0035.034



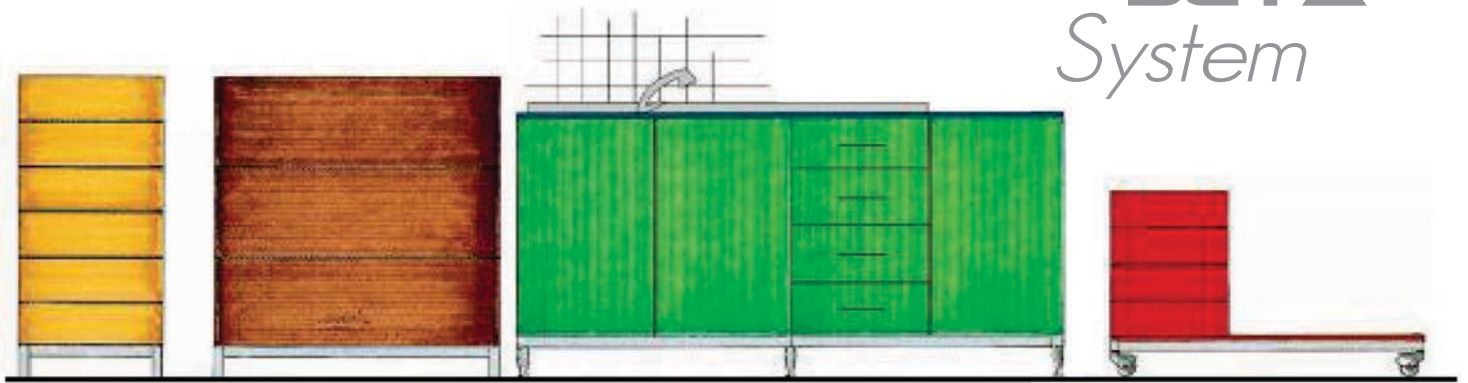
*Fixing support for shelf.*  
Set of 2

Art. 7090.0128.030



*Glass stop.*  
Set of 2  
A7094.0070.030

# BETA System



Some examples of the "BETA" System in the various versions using three connectors.



Angel fitting A/3 35x35x35 -8mm for wheel.

**A7050 M8.0035.034**

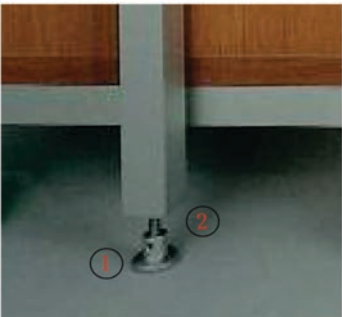
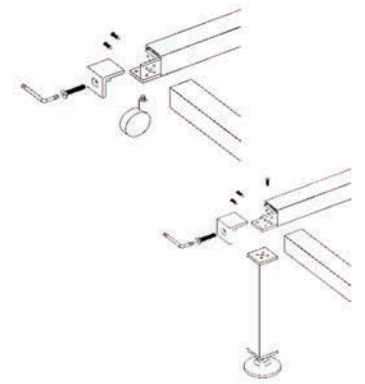


1. Leg with regulator 35x35

**A7068.....034**

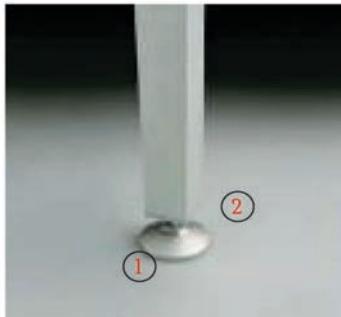
2. Angel fitting A/3 35x35x35.

**A7050.0035.034**



1. Adjustable leg.

**A7066.0035.034 (mm. 35)**



2. End 35x35x5mm - 8mm.

**A7053.0035.034**

1. Adjustable leg.

**A7057.0060.034 (mm. 60)**



Plate for attachment of central leg.

**A7071.0085.999**



Ph. 1-914-909-4571 Fax. 1-914-909-4572 - [www.allforfurniture.com](http://www.allforfurniture.com), [www.affestore.com](http://www.affestore.com)